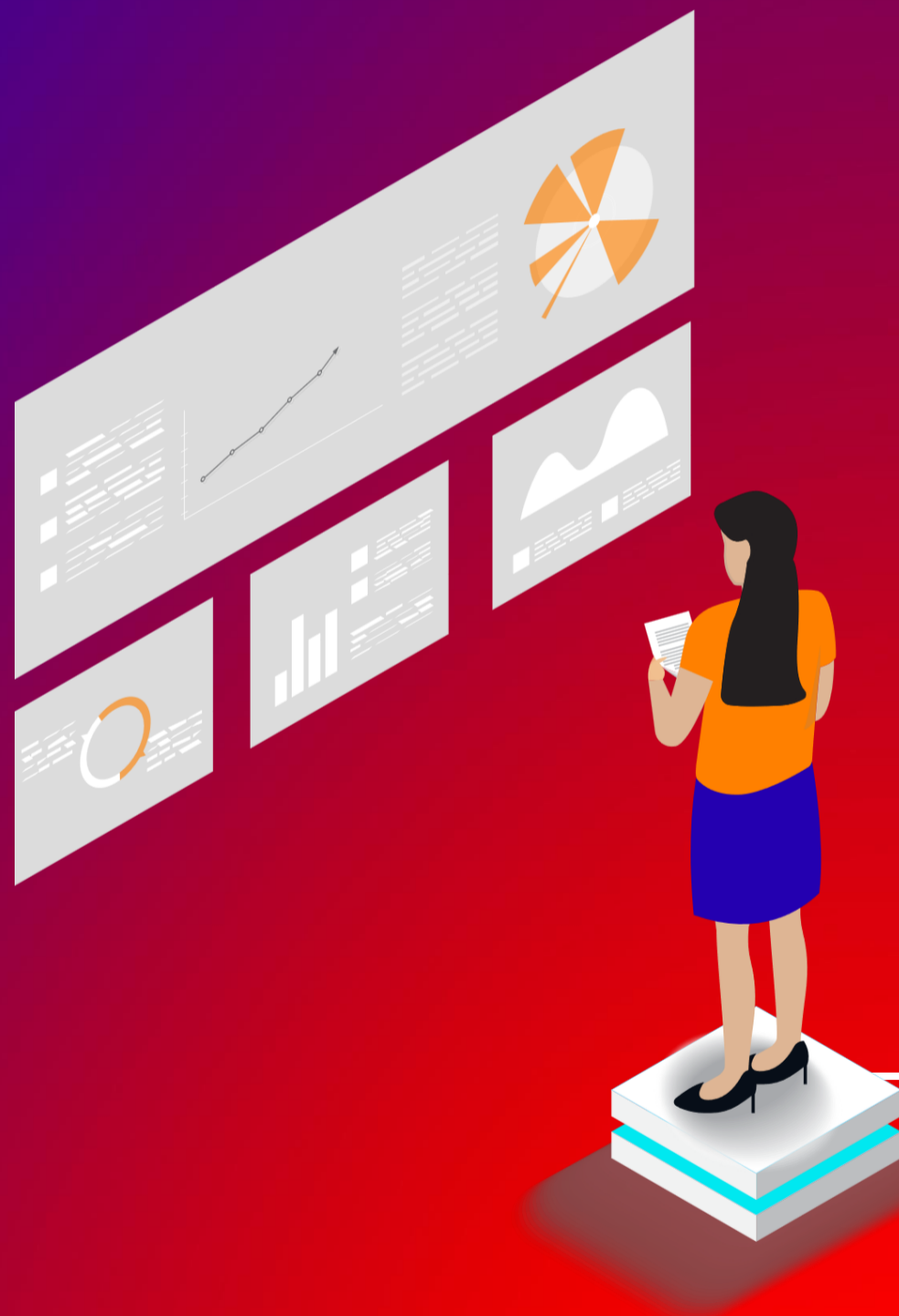


Pioneering AI for over 30 Years

As a global leader in AI ,
Fujitsu boasts over 200 AI
patents filed and a track
record of 7,000+ customer
use cases.

Swipe to explore our
journey through the
decades ➡





First boom
1960 – 1970's

1984

World-Wide
Japanese-English
translation system

1987

Artificial
Intelligence
System

KSA Knowledge
Information System

Second AI boom



2003

Palm Vein
Authentication with
Image Recognition
Technology

Speech synthesis
technology for
natural and diverse
speech

1988

Robot
control by
neural robot

2005

Voice speed
change
technology
by AI

Second AI boom

2013

World's first use of disclosure of in linked **Open Data Free** infrastructure

Torobo: Robot test for Tokyo University entrance examination

2015

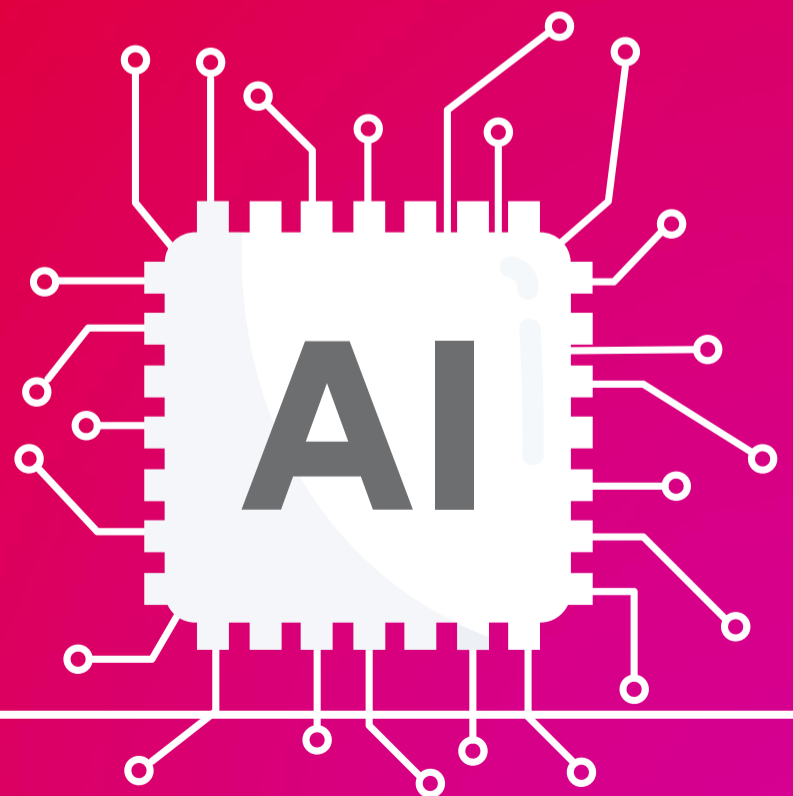
AI service platform "**Human Centric AI Zinrai**"

2016

World's fastest speed **DL parallelisation technology**

Deep Learning: **Topological Data Association Analysis (TDA)**

Graph Neural Learning "**Deep Tensor**"



Third AI boom

2017

“Digital Annealer” for fast combinatorial optimisation problems

Explainable AI with Deep Tensor and Knowledge Graph

2018

Explainable AI with wide learning



2019

Gymnastics competition scoring support system

Third AI boom



2023

LLM with Fujitsu
supercomputer
Fugaku

**AI trust
technology**
against
hallucination
of Generative AI

Generative AI
Fujitsu Auto ML

**Fujitsu Composite
AI**

2022

AI Platform
Fujitsu Kozuchi

AI Ethics
Governance

2020

Human
behaviour
analysis
"Actlyzer"

2024

Japanese LLM
with Cohere
Takane

Third AI boom

Stay tuned for more updates
on Fujitsu's AI journey!

**Visit our Data & AI website to
learn more**